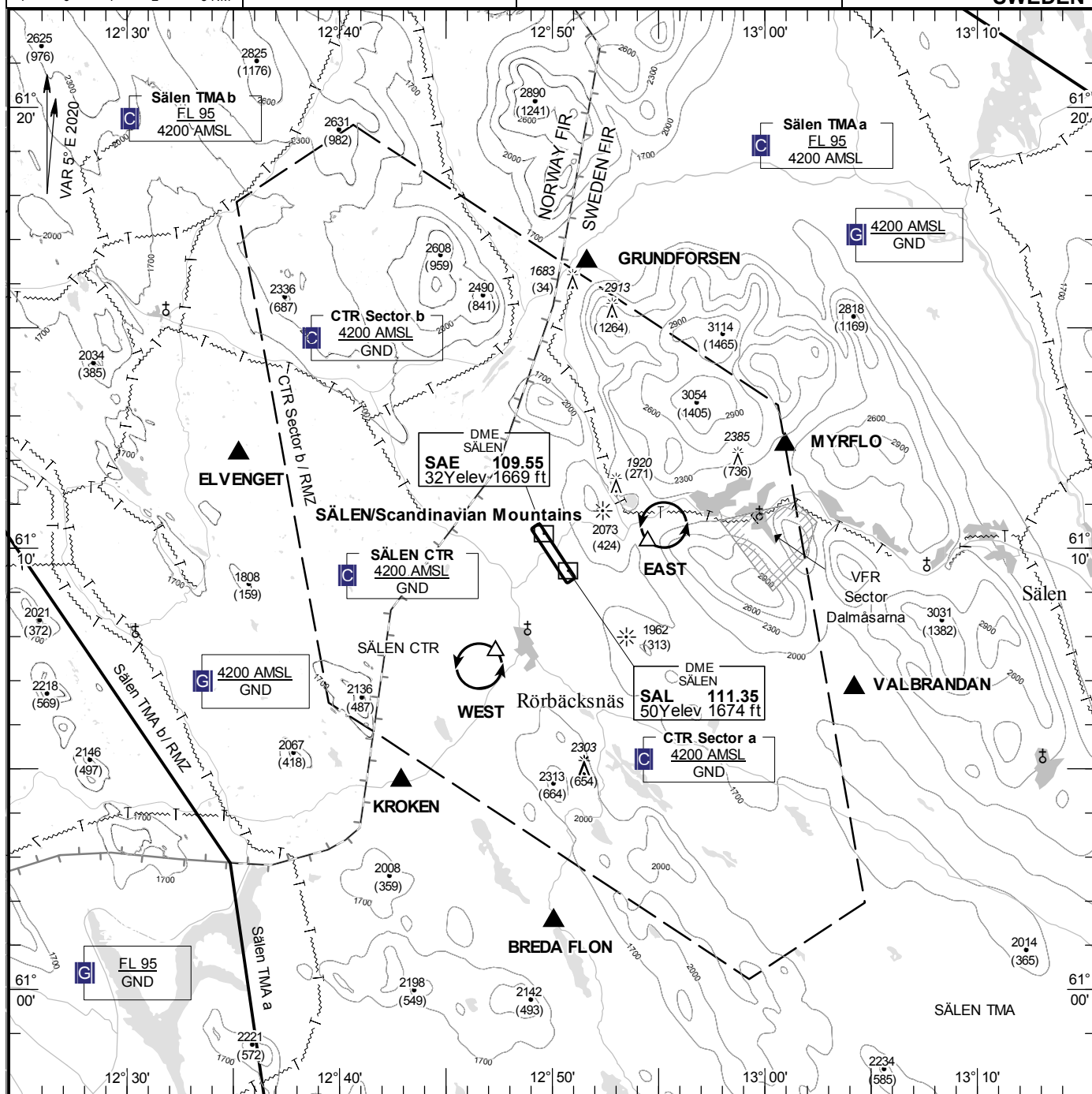


**TA 6000 AMSL**

124.460

**SÄLEN/Scandinavian  
Mountains  
SWEDEN**



- 1 SQUAWK 7600
- 2 Contact TWR on TEL +46 (0)60 646202 for clearance.
- 3 If telephone contact cannot be established, enter CTR via MYRFLO to holding EAST.
- 4 Hold in EAST 5 min and flash with landing lights and wait for optical signals from R-TWR.
- 5 If optical signals cannot be perceived, start APCH via overhead to RWY of choice.
- 6 Confirm runway free.
- 7 Land and taxi to apron.

GRUNDFORSEN	611629N 0125137E
MYRFLO	611220N 0130057E
VALBRANDAN	610649N 0130412E
BREDA FLON	610132N 0125004E
KROKEN	610443N 0124253E
ELVENGET	611208N 0123515E

EAST: Hold at sewage plant, north east of point 611008N 0125430E

WEST: Hold at lake Laxtjärn and Mörttjärnen, south west of point 610739N 0124720E

VFR/Paragliding sector Dalmåsarna open daily OCT-APR 0800-1700 (0700-1600) and MAY-SEP 0700-1900 (0600-1800). During MAY-SEP paragliders may also occur both vertically and horizontally outside the sector when Sälen ATS is closed.

**Legend**  
See GEN 2.3